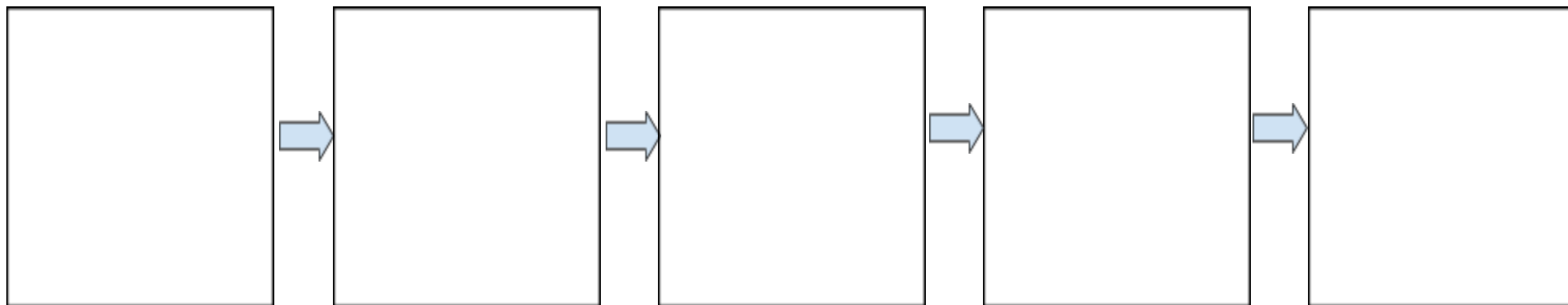
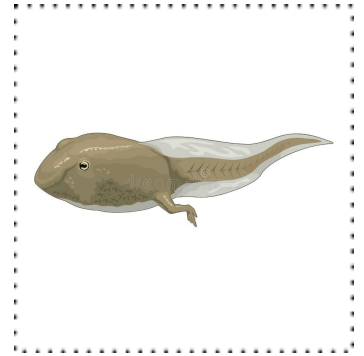
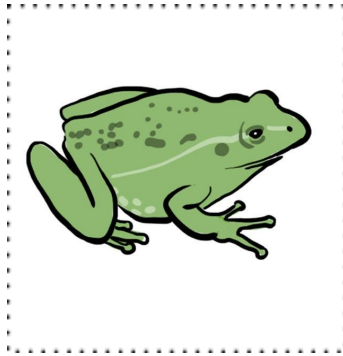
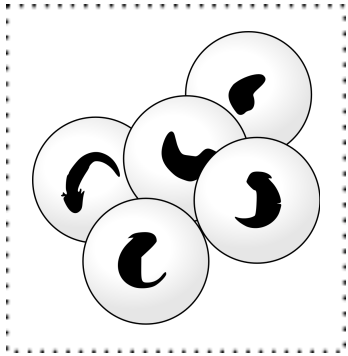
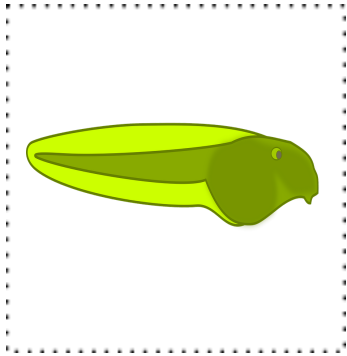


Frog Life Cycle

Paste the life cycle cards in order



----cut out----



Write the following labels under each box or cut and paste the labels below.

Eggs

Tadpole

Tadpole with 2 legs

Froglet

Adult Frog

Directions: Cut out the following book and staple in order. Draw a picture on each page.

My

Frog

Book

Name: _____

A female **frog** lays a lot of eggs in a pond. The cluster of eggs float on water in a jelly mass. Soon, the eggs will hatch into tadpoles!

The tadpole looks more like a fish than a frog when it hatches because it hasn't grown legs!

Gills allow it to breathe underwater. The tadpole eats plants and algae.

The tadpole starts to grow two hind legs. This allows it to leap around AND swim. The tadpole is starting to look more like a frog, but it still has a long tail!

The tadpole soon grows two front legs. The tail becomes shorter. It uses the nutrients stored in its tail as food so it doesn't need to eat insects yet.

The frog's tail will fade away and the frog will start to eat insects instead of plants from the water. It takes about 2-4 years to become an adult frog. The adult frog can then lay eggs.